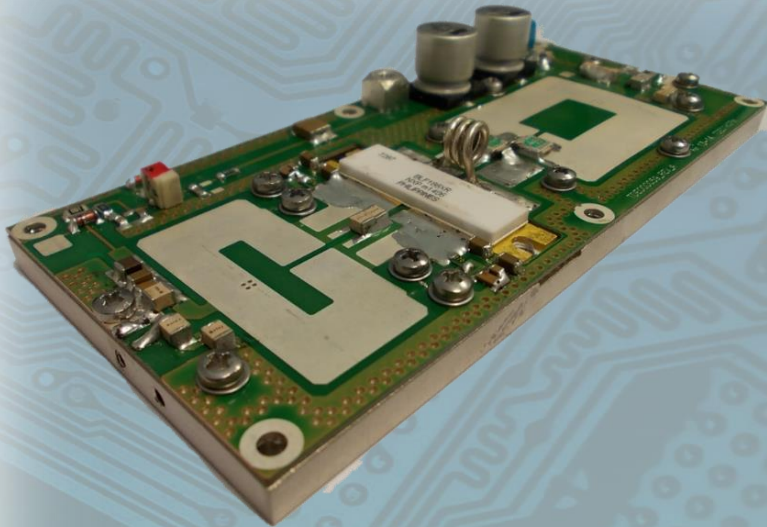


# Broadcasting



## TDE1K0FM

### Characteristics

#### TDE1K0FM

is a broadband FM high power amplifier based on BLF188XR LDMOS device in a SOT539A ceramic package.

#### TDE1K0FM

works in B class and it is able to cover the whole frequency band 87.5-108 MHz.

#### MAIN FEATURES

- High efficiency
- High Ruggedness

### FM Performance Summary

Parameter	Min.	Typ.	Max.	Units	Note
Power	900	1000		W	(*)
Frequency Range	87.5		108	MHz	
Gain		23		dB	
Input Return Loss		-10		dB	
Voltage Supply		48	50	V <sub>dc</sub>	
Bias Current		150		mA	
Harmonic content	-60			dB <sub>c</sub>	(**)
Efficiency	80			%	(***)



tde@tdeitaly.com



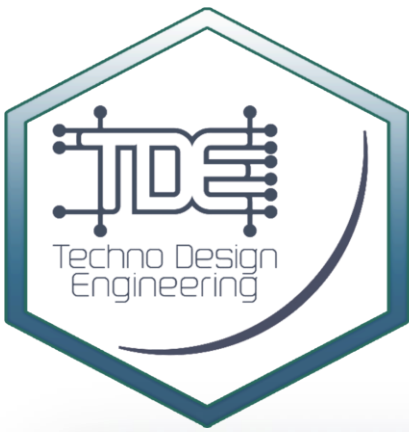
www.tdeitaly.com



(+39) 0765484028



TDE - Techno Design Engineering  
Via Tiberina, 49  
00065 Fiano Romano (RM), Italy



# Broadcasting

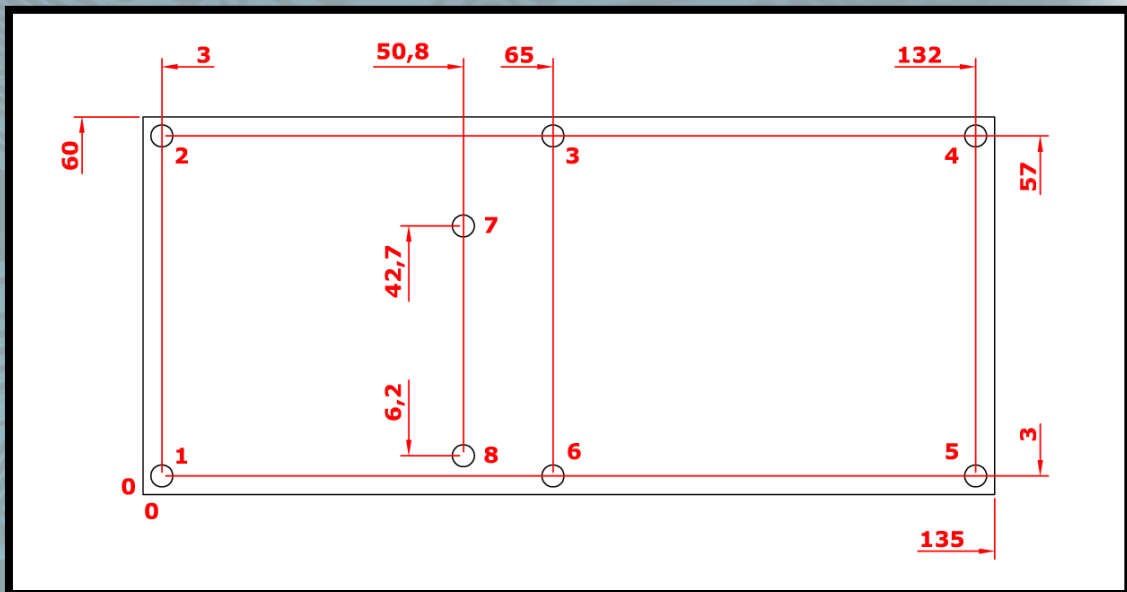
## Notes

- (\*) The output power is specified in CW
- (\*\*) The harmonic content is referred to the typical power out and with low pass filter inserted
- (\*\*\*) The efficiency is referred to typical power out and under ALC control

## Screws Type

- **Screws point 1-2-3-4-5-6-7-8**  
M3 socket head cap screws  
+ 8 split lock washers WZ  $\varnothing$  3.5  
+ 8 flat washers WZ  $\varnothing$  3.5

## Mechanical Specifications



TDE reserve the right to make changes to the product(s) or information contained herein without notice. TDE doesn't assume responsibility for any errors which may appear in this document. Warranty information applicable to the product identified here in is available upon request. Nothing contained herein shall constitute a warranty, representation or guarantee of any kind. TDE expressly disclaims all other warranties, express and/or implied including but not limited to warranties of merchantability, and of fitness for a particular purpose, use or application.

No part of this document may be copied or reproduced in any form or by any means without the prior written consent of TDE.



tde@tdeitaly.com



www.tdeitaly.com



(+39) 0765484028



TDE - Techno Design Engineering  
Via Tiberina, 49  
00065 Fiano Romano (RM), Italy